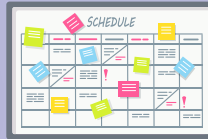




# FAB SCHEDULING

## Tips & Tricks



Try these tips and tricks to overcome the challenges of flexible, activity-based scheduling that accommodate bursts of support when needed.

Challenge → Try...

**Going during naturally occurring times of the routine/activity setting**



Planning with the caregiver(s) around multiple activity settings/routines that support their desired priorities. This provides flexible options for scheduling based on your and the family's availability.

**Family struggling to keep track of visits**



Problem-solving with the family to figure out what best helps them keep track of appointments (e.g., setting reminders, text from provider).

**Reflecting with caregivers during busy routines/activity settings**



Using a variety of coaching strategies: reflection-for-action (before the activity occurs), reflection-on-action (after the activity has occurred), or video reflection with caregivers (recorded prior to visit or during visit).

**Balancing family-driven scheduling with work and personal calendar**



Setting boundaries based on your program's guidelines and personal commitments that you have (e.g., block calendar for times you are not available, only offer times that you can do).

**Knowing when to use a burst of support**



Providing a burst of support when a new or particularly challenging priority arises, multiple caregivers need support, or progress has stalled.

**Knowing how to best make a burst fit a family's individual needs**

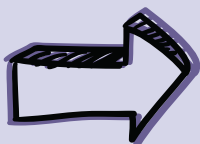


Thinking about the different ways a burst might look: a couple of shorter visits in a week, having one visit in an activity and one focused on resource supports, and having visits with each caregiver you are supporting.

**Knowing when to end a burst of support**



Discussing with the family their confidence and need for on-going support based on progress made on IFSP outcomes.



**Visits that occur during the routine the family wants help with are efficient, reduce missed visits, and increase caregiver buy-in and participation.**



Family, Infant and Preschool Program  
of the  
J. Iverson Riddle Developmental Center  
(C) 2024, Family, Infant and Preschool Program. All Rights Reserved.



NC DEPARTMENT OF  
HEALTH AND  
HUMAN SERVICES