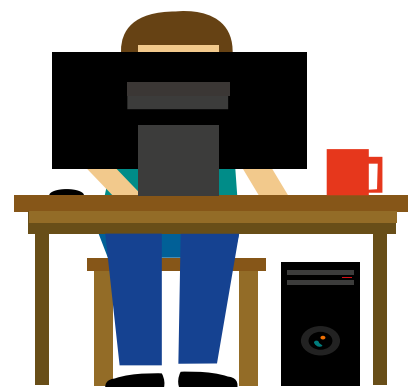




# An early intervention guide to Tele-Coaching

## Joint Planning

- **Revisit Previous Plan:** Begin each televisit with a discussion of what the caregiver has been practicing. You can also be creative with how caregivers use video to update you on what happens between televisits.
- **New Between Visit Plan:** In addition to a strong plan for the activity for each visit, work with caregivers to determine what daily activities they will focus on between televisits to practice new skills.
- **New Next Visit Plan:** Make sure you and the caregivers plan for your next visit by identifying a real life routine in which you and the caregiver will promote the child's participation related to the IFSP outcomes. Tele-intervention is NOT the activity setting!



## Observation

It can be easy to skip this step during a televisit, but it is essential! Explain to families that you still need to see and be a part of a real life activity. If you cannot see what coachees are doing or need to ask specific questions about the environment, make sure you do.

## Action/Practice

Brainstorm ideas with families for creative camera positioning. As a coach, you will likely use more prompting and cuing, rather than intentional modeling, when introducing a new strategy. Be willing to watch and quietly analyze as the caregiver practices strategies within the activity. Understand that the practice occurring during your conversation may be shorter.

## Reflection

The need for open-ended questions to prompt caregiver reflection does not change during a televisit! You may find yourself asking more yes/no questions trying to understand what is happening, but consider whether a question like "What reactions did you see?" could replace "Did she do it?" This is a perfect opportunity for you to help caregivers learn to analyze the situation and identify alternatives without you present.

## Feedback

Unnecessary verbal feedback may be particularly jarring to a family during a televisit. Keep your feedback specific and necessary, and remember that nonverbal feedback may not transfer well to a televisit.



Family, Infant & Preschool Program  
of the  
J. Iverson Riddle Developmental Center



NC DEPARTMENT OF  
HEALTH AND  
HUMAN SERVICES